

RELIANCE - Breast Cancer: REaL-life cANCER epidemiology research - First study using population-based cancer registry data of breast cancer from Luxembourg

Allini Mafra¹, Valérie Moran^{2,4}, Mounir Talbi¹, Ibrahima Niang¹, Jean-Luc Jucker¹, Michaël Schnell¹, Nicole Majéry³, Marc Suhrcke², Sophie Couffignal¹, Claudine Backes¹

¹ Registre National du Cancer, Public Health Expertise Unit, Luxembourg Institute of Health, Luxembourg. ² Luxembourg Institute of Socio-Economic Research, Luxembourg. ³ Service de santé au Travail Multisectoriel (STM), Luxembourg. ⁴ Socio-Economic and Environmental Health and Health Services Research Group.



BACKGROUND

- The **RELIANCE** study is a large project aiming to use data from Luxembourg's National Cancer Registry (Registre National du Cancer du Luxembourg - RNC) for cancer epidemiology and prevention research in the Grand Duchy of Luxembourg and increase the data quality and linkability with potential other secondary data sets.
- The **RELIANCE - Breast cancer** is the first pilot study of RELIANCE, which will investigate breast cancer epidemiology in Luxembourg, using RNC data and exploring potential methods and international comparisons as well as investigating which health outcomes can be studied with additional primary and secondary datasets. This project was approved by the CNER (Comité National d'Éthique de Recherche).

AIMS

RELIANCE - Breast cancer uses a two-step approach.

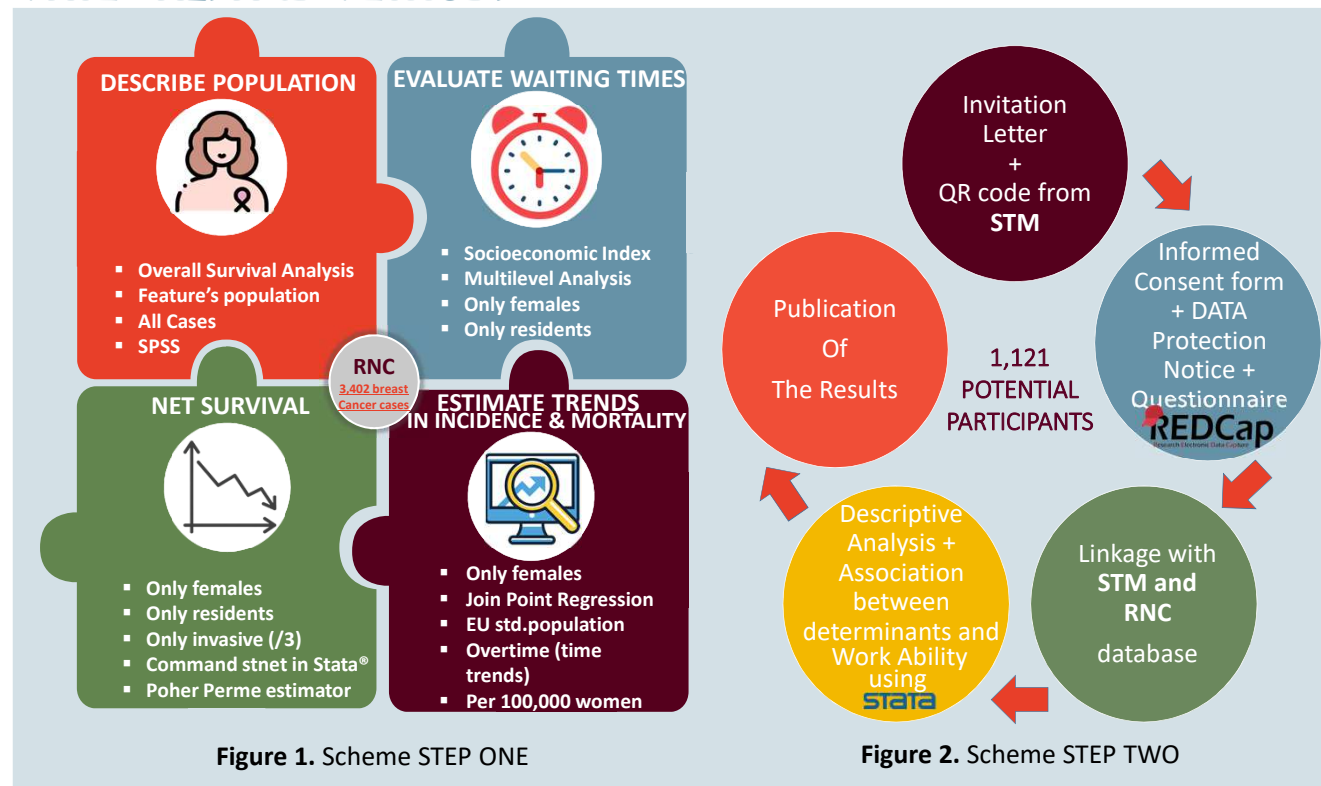
STEP ONE is a retrospective analysis using the RNC female breast cancer cohort from 2013-2018 that aims to:

- describe the characteristics of the population;
- evaluate waiting times for diagnosis and treatment;
- estimate trends in incidence and mortality;
- evaluate the survival rates.

STEP TWO is a cross-sectional prospective study based on an online self-administered questionnaire to collect additional data from breast cancer survivors who visited the public occupational health service (Service de santé au travail multisectoriel - STM) that aims to:

- evaluate the return to work after a diagnosis and treatment of breast cancer.

MATERIALS AND METHODS



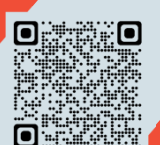
CONCLUSION

This study will **generate** the first set of indicators on breast cancer in Luxembourg, while simultaneously **enhancing data quality and usability**.

In addition, the study will yield international insights into the applications of population-based cancer registries for small developed countries.

CONTACT INFO

Scan the code to
check the
study webpage



Claudine Backes Claudine.Backes@lii.lu