

Incidence trends of thyroid cancer incidence in the Manche French department between 1994 and 2020

Simona Bara, Sandrine Paris, Bénédicte Beauvois, Anne-Sophie Brocard, Erika Anjot, Delphine Yver-Large, Delphine Degré-Dubois

Manche Cancer Registry, Centre Hospitalier Public du Cotentin, Cherbourg-en-Cotentin, France

INTRODUCTION

Incidence of thyroid cancer increased sharply in the past decades at the national level, due to improvements of diagnostic procedures, and detection of the tumors in an earlier stage. The purpose of the study was to describe the trend in the incidence of thyroid cancer in over 27 years in the Manche French department.

METHODS

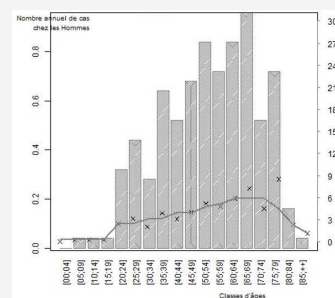
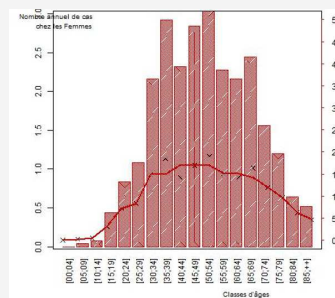
We collected thyroid cancer cases between 1994-2020 from the population-based Manche Cancer Registry. All thyroid cancer cases were classified according to the International Classification for Diseases in Oncology, 3rd edition. World age-standardized incidence rates were analyzed using a Poisson regression model, in order to estimate average annual percent changes (AAPCs).

CONCLUSION

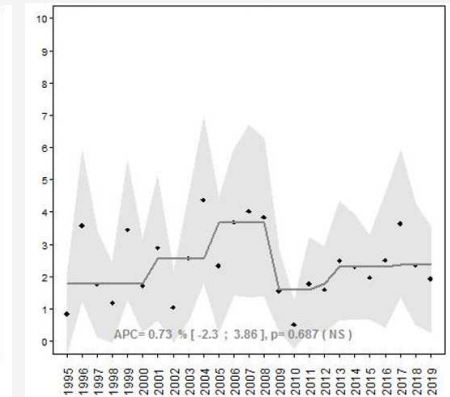
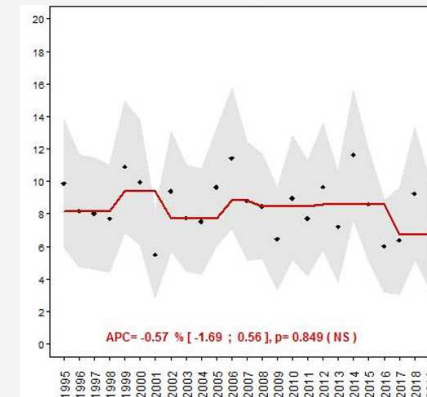
In our study, we did not observed a statistically significant trend changes in the incidence of thyroid cancer in both sexes during the period studied, while at the national level, the incidence has greatly increased in the two past decades for both sexes. The department is under-incidence compared to the national average, but strong geographical disparities are observed.

RESULTS

During the period 1994-2020, 939 patients with thyroid cancer were identified, with an average of 38 new cancer cases per year. Among them 77.6% in women and 22.4% in men. On average, thyroid cancer was diagnosed at 51 and 53 years in women and men respectively. The most frequent histopathological subtype was PTC (63.1%). Overall standardized incidence rates per 100 000 were 8.5 for women and 2.4 for men. Standardized incidence per 100 000 patient-years varied from 8.9 in woman for the first period (1994-2000) to 7.4 in last period (2009-2020) and from 2.2 to 2.5 for men.



Number of cases and incidence by age group and sex



Evolution of the standardized incidence per 100000 person-year of thyroid cancer by sex between 1994-2020

Period	1995 - 1999	2000 - 2004	2005 - 2009	2010 - 2014	2015 - 2020	Average
Men	2,2	2,5	3,1	1,7	2,5	2,4
Women	8,9	8,0	9,0	9,0	7,4	8,5

World age-standardized incidence rates of thyroid cancer by period in the department of Manche